



CCTV Security Surveillance

Company Profile



CCTV

National

Est 1967

Access Control

Alarm Systems

Electric Fencing

PA Systems

Intercom Systems

AI Shoplift Detection

Text Overlay Integration

Off-site Monitoring

www.cctvsa.co.za

cctv@cctvsa.co.za

086 100 2288

About Us

Security
Surveillance
Efficiency



CCTV Security Surveillance is a South African company, servicing the markets nationally, to the commercial and industrial markets.

CCTV originated in Gauteng in 1967, and has expanded the CCTV footprint to divisions in KwaZulu Natal, Western Cape and Eastern Cape. The company is lead by a strong executive board consisting of four directors nationally, each bringing diverse strengths accross all areas of the company's requirements. Their combined expertise compliments the company's overall strength, ensuring strategic guidance and operational excellence.

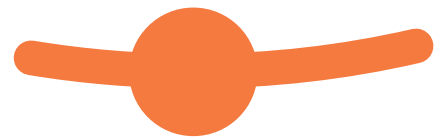




CCTV pride themselves in that the majority of employees have long term of service with the company.

CCTV encourages long term staff members to play an active role in the running of the business, and are proud to have some of these employees on the executive board.

CCTV analyze their company requirements in conjunction with employee's capabilities and talents, so that the company is able to steer their employees in a direction in which they would be most suitable and be able to grow within their field utilizing their natural strengths.



By implementing this method, both employee and company understand each other's requirements and expectations..

With constant training, research and development CCTV is able to provide the latest state of the art equipment, and are able to install and maintain these systems with confidence.

Our people are our strength!





Our Products & Services

CCTV Security Surveillance is a South African company, servicing the markets nationally. The company specializes in electronic security systems including, but not limited to, CCTV, access control, electric fencing, intercom systems, PA systems and alarm systems, not only in the area of security but also in production, productivity and health and safety. CCTV services the commercial and industrial market. Each client is seen as an individual, with specific requirements, and as such each system is developed around the client's needs.

B-BBEE
Level



CCTV offers an **Off-site monitoring**, service where the clients premises is monitored off-site and all events are also recorded off-site. This system is incorporates artificial intelligence, so it is set up to the sites requirements.

ShopLift Detection - Unique artificial intelligence to detect shoplifting and theft habits in real time. CCTV systems provide the added benefit of recording live footage for surveillance during the day as well as storing footage for later review. .

Facial recognition, where an off-site database is created, by us, and notification can be sent to the client should a "VIP face" or "warning face" enter your premises.



ShopLift Detection

CCTV has a longstanding history in the business industry and always strives to provide an effective service to all their clients, offering the options to suite our clients budgets.

These services have been available from CCTV for over 50 years.



Off-site Monitoring

- **Purchase**
- **Full Maintenance and Repair Rental**
- **Rental**
- **Maintenance / SLA Agreements**

Maintenance contracts ensure that the clients system always operate at optimum levels.



Facial Recognition



CCTV Systems

CCTV systems are constantly evolving with technology. Smarter systems are available to remove the human error and also to reduce the cost of man hours.

There are many different options when it comes to CCTV systems. CCTV SA build the systems around the clients needs and budgets, always offering the best suited systems for the site and clients requirements.

CCTV surveillance systems now days, have **artificial intelligence** built into the systems and / or equipment. For this reason, the CCTV system is able to do allot of work for you, making it easier to find certain objects or people. They also assist with better identification, using better quality images in mega pixel format.

High Definitions (HD) CCTV Systems, is still the most cost effective option when it comes to the security industry. However, is limited to certain aspects of CCTV systems.

IP security systems is the way of the future. With an IP security systems in place it opens a whole lot of doors for the clients security systems. As well as excellent image quality.





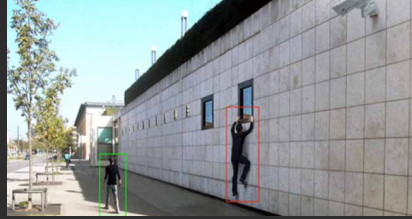
CCTV Control Rooms and Control Room Consoles

Designed and custom built for our clients. They are ergonomically correct for the clients environment, making it a functional and pleasant atmosphere.





System Functions



Interfacing

Till / Scale / pump and Weigh bridge interfacing & integration

Systems integrate into the CCTV systems. This allows for clients to find transactions on the CCTV systems easily, and assists with finding footage and incidents easily on the system.

Perimeter Detection

Perimeter detection

A popular and needed security system. CCTV SA install the systems accurately and if there is any breach of the premises perimeter, the clients are notified immediately. Either via our control room (if on an off-site monitoring agreement) or via your alarm system in place. Prevention is always better than cure.

People Counting

People counting systems

Helps you monitor how many people are on your premises or in a certain area.

Facial Recognition systems are available to monitor who and when people enter your premises.





License Plate Recognition (LPR)

Monitor vehicles entering or exiting your premises or parking area. Flagged vehicles will be alarmed allowing you to respond accordingly.

Loitering systems

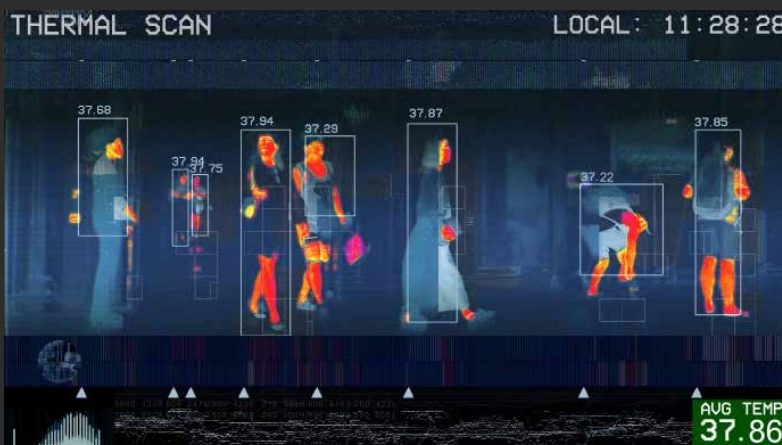
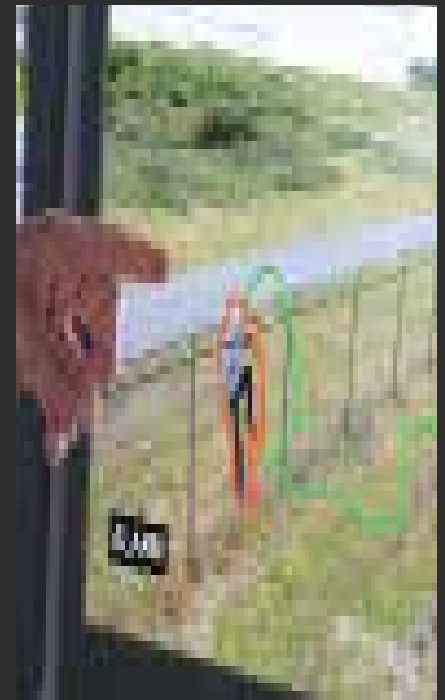
Assist with notifications if people or objects are in a certain area for an unusual amount of time.

Cross line Detection systems

Used for numerous applications. The system can be set up to alert you and send you a notification, should something or someone go into a certain area that should not be there,.

Fever Detection systems

Protect your staff and clients from disease. Systems check people's temperature before they enter your premises, and sends an alarm should someone have a high temperature.





Access Control

RFID Scanners

Card and tag scanners, used to control entrance in authorized areas only and can also be linked to time and attendance

Boom Gates

Boom gates allowing vehicles entrance into properties. The boom gate entrance readers can incorporate the RFID scanners or biometric scanners, or printed cards linked to payment terminals for things like paid parking areas for clientele.



Turnstiles

Used for people entrances, these can be linked to the time and attendance systems or used for crowd control.



Biometric Scanners

Finger print or palm scanners, facial readers, iris readers, all options of access control using biometric technology to recognize the person allowed access.

Electric Fencing

Protects your perimeter from people coming into your property, and can be linked to the alarm system or off-site monitoring control room



Bollards

Used as a strong obstruction to prevent vehicles going into an area, they can also be motorized, so they can be dropped should it be required.

Spike Barriers

Used in conjunction with boom gates, stopping unwanted vehicles to pass through.

NO Touch Access Control

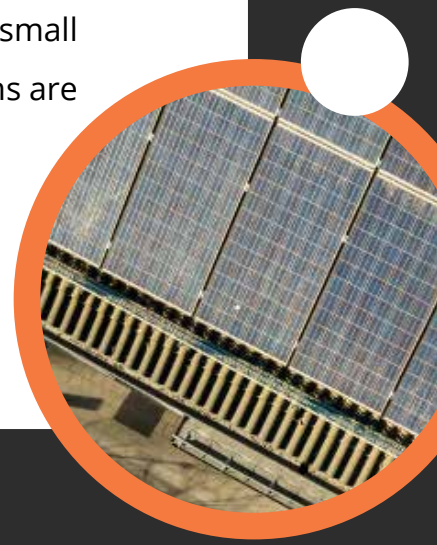


With hygiene being a priority, No Touch Access Control is the way forward. From facial readers, to palm or wave readers. RFID cards and tags or smart phone scanners, there is a variety of options. For access control and can be linked to time and attendance.



Inverter and Solar Systems

Backup power has become a priority to all business, CCTV supplies and installs inverter systems which can be linked to solar for charging as well as grid power for charging purposes. From small to large scale systems, we will make sure your security systems are up and functioning throughout load shedding.



Intercom Systems

CCTV offers a wide range of intercom systems:

Analogue systems are basic point to point wiring;

These intercoms are available in audio and video but are basic systems and cannot be upgraded to larger systems.

IP Network audio and video intercom system

IP network based intercoms can be deployed into a client's existing network infrastructure. IP system can be integrated into building management systems and CCTV systems.

GSM Intercom systems

allow your mobile device to act as an intercom handset.



Custom designed systems, to suit your companies need, requirements and budgets.



Maintenance and SLA agreements to keep your systems running at optimum level



PA Systems

PA systems, which distribute clear and audible sound, are comprised of an electronic sound amplifier, microphone and loudspeakers.

A selection of models is available, each of which is designed to address a number of people in varying sized spaces or buildings.

Small - Large PA Systems

Telephone Paging Systems

Small - Large Venues

Pepper / Chili Spray Systems

Used to protect entrances / computer / store rooms or in cash offices as another line of defense.

These systems can run independently



Top class installations and systems, with over 50 years experience in the industry.

CCTV



Ethics, Equities, Social Responsibility & Skills Development



CCTV is committed to the Consumer Protection Act, which protects our clients.

We also have a strong code of **ethics** for our employees. We have retained the services of a professional company, to ensure that all our policies and procedures are fair to all, and thereby not encumbering on any individual within the company, whether, it pertains to contracts, labour or terms and conditions of sale. These are audited on a regular basis to accommodate any changes that may occur. By enforcing good ethics, sound business practice is the natural progression.



CCTV's equities plan is up to date and ensures the growth of the company in the right areas. This is strictly monitored for any variances, so that it can be adjusted, improved and updated whenever required.

Where ever possible CCTV makes an effort to support their local community, in numerous charity drives. CCTV's commitment to their **social responsibility** remains strong and continues to strive to make a difference wherever possible in the communities in which we live and work.

Skills Development. In the spirit of job creation, CCTV is committed to taking on new staff members and training them to the expected levels, thereby empowering their employees to improve themselves, their confidence, and be able to provide for their families. We encourage all our employees to participate in the training courses available on a regular basis and thereby also keeping the knowledge base expanding. Training is a very important part of the business. Technicians are trained and put on refresher courses bi monthly. This keeps them current with all new products and reinforces procedures to stay in line with CCTV policies, procedures and ethics.



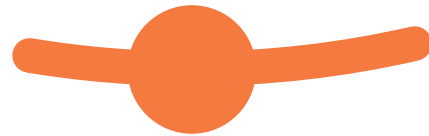
B-BBEE

CCTV Security Surveillance Gauteng (Pty) Ltd has been verified and holds a

Level 2

scorecard. Through a SANS accredited agency. As well as being a value adding supplier

In the true sense of empowerment CCTV Security Surveillance Gauteng (Pty) Ltd is committed to improving their rating on an ongoing basis. As per our Equities and Skills Plans submitted to the DTI, we strive to improve in the areas of skills development, ownership and management. This affords all our previously disadvantaged employees to uplift themselves and gain experience which will forever stand them in good stead.



Skills development is ongoing within the company. Training programs are in place to ensure that the technicians are kept up to date with the latest technology. Courses are offered on a regular basis and all employees are encouraged to attend. Where necessary we obtain external training for our staff. We are proud of our trainees who qualified in access control with an average of 85% overall. Our technicians on Fire Training all achieved over 95%. Management programs are in place to improve the performance of all decision makers within the company. Internal, performance improvement programs are in place in all departments to achieve optimum efficiency. The internal programs are all overseen by senior management.

Broad-Based Black Economic Empowerment

B-BBEE

When looking at direct ownership, the policy of CCTV is that, since the responsibility of having ownership in a company does not end at merely owning shares in the business, there are responsibilities coupled to the privilege of owning shares. We also expect our shareholders to take an active role in the business and to understand the running of a business, where necessary we pass these skills on to employees with an interest in share ownership. We have always made sure that all shareholders are aware and understand these responsibilities prior to taking acquisition of shares.

This in turn, does take time, however, this method has proved to work as a strong foundation for the company which in turn leads to the sustainability of the business. CCTV has a reputation of retaining long term staff compliment, and feel that our healthy relationship with our staff, our current 5 year plan will be achieved.

The demographics of our company reflects the encouragement that we are affording staff in that we currently have 17 previously disadvantaged individuals, in junior management or supervisory positions. This would be a percentage of 52.8% of the total of that demographic. Our total employment equity status as per our last verification report stands at 54.9%. Our target for the next period is 60%.

Procurement values would also reflect an improvement in the coming verification period, this mainly being due to the fact that most suppliers now have obtained their verified scorecards. Due to the nature of our business, we are limited as where to obtain our products as we need to maintain a standard to which our clients are accustomed.

Therefore, taking the above into consideration and the current verification reports, it is obvious that the rating of the company will improve over the next period.

This being dependent on resources and the financial state of the country during that course of time, and by such would determine to what extent that improvement would be.



OHS

Requirements

CCTV has 3 Occupational Health and Safety representatives appointed to oversee projects in the various regions. Their responsibility is to ensure a safe working environment for all. Regular training is given to technical staff as to safe working practices, and the correct use of equipment and tools. Each site is individually assessed to ensure that every individual on the site is fully aware of all risks that may be encountered and how to effectively deal with such risks. All staff members of CCTV undergo physical and emotional medical testing to ensure they are fit to undertake their appointed duties.



Client Experience

*Mining Industry

*Warehousing

*Property Management

*Logistics

*Petrochemical

*Aviation

*Manufacturing

*Hospitality

*Government

*Retail

*Banking

*Education and Training

*Security

*Asset Management

*Crowd Control

*Hospitals and Institutes



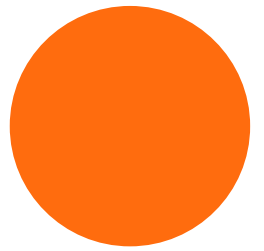


CCTV Security Surveillance

National Tel: 086 100 CCTV

www.cctvsa.co.za

cctv@cctvsa.co.za



CCTV Security Surveillance Gauteng (Pty) Ltd

Registration Number: 1997/018722/07

VAT Number: 4670170143

PSIRA Reg Number: 960468

Head Office - Gauteng

23 Linksfield Road

Dunvegan, Edenvale,

Tel: 011 4545440

Western Cape

Unit N1 & N4 Centurion Business Park,

Democracy Way, Marconi Beam

Tel: 021 552 9303

Eastern Cape

Unit 18, The Network,

10 Cactus Road, Fairview, Gqeberha

Tel: 066 122 4979

CCTV Security Surveillance (Pty) Ltd

Registration Number: 2009/007829/07

VAT Number: 4290307604

PSIRA Reg Number: 4412150

KwaZulu Natal

Unit 6&7 Briarpark

10 Queen Nandi Drive

Briardene, Durban North

Tel: 031 563 4214

